

PSMD5 Antibody(C-term)
Affinity Purified Rabbit Polyclonal Antibody (Pab)
Catalog # AP19711b

Specification

PSMD5 Antibody(C-term) - Product Information

Application	WB,E
Primary Accession	O16401
Other Accession	O8BJY1 , Q0P5A6 , NP_005038.1
Reactivity	Human
Predicted	Bovine, Mouse
Host	Rabbit
Clonality	Polyclonal
Isotype	Rabbit IgG
Calculated MW	56196
Antigen Region	428-457

PSMD5 Antibody(C-term) - Additional Information

Gene ID 5711

Other Names

26S proteasome non-ATPase regulatory subunit 5, 26S protease subunit S5 basic, 26S proteasome subunit S5B, PSMD5, KIAA0072

Target/Specificity

This PSMD5 antibody is generated from rabbits immunized with a KLH conjugated synthetic peptide between 428-457 amino acids from the C-terminal region of human PSMD5.

Dilution

WB~~1:1000

E~~Use at an assay dependent concentration.

Format

Purified polyclonal antibody supplied in PBS with 0.09% (W/V) sodium azide. This antibody is purified through a protein A column, followed by peptide affinity purification.

Storage

Maintain refrigerated at 2-8°C for up to 2 weeks. For long term storage store at -20°C in small aliquots to prevent freeze-thaw cycles.

Precautions

PSMD5 Antibody(C-term) is for research use only and not for use in diagnostic or therapeutic procedures.

PSMD5 Antibody(C-term) - Protein Information

Name PSMD5

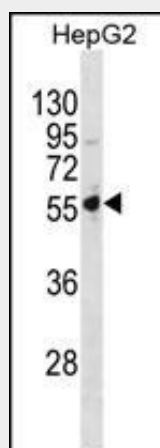
Synonyms KIAA0072

Function Acts as a chaperone during the assembly of the 26S proteasome, specifically of the base subcomplex of the PA700/19S regulatory complex (RC). In the initial step of the base subcomplex assembly is part of an intermediate PSMD5:PSMC2:PSMC1:PSMD2 module which probably assembles with a PSMD10:PSMC4:PSMC5:PAAF1 module followed by dissociation of PSMD5.

PSMD5 Antibody(C-term) - Protocols

Provided below are standard protocols that you may find useful for product applications.

- [Western Blot](#)
- [Blocking Peptides](#)
- [Dot Blot](#)
- [Immunohistochemistry](#)
- [Immunofluorescence](#)
- [Immunoprecipitation](#)
- [Flow Cytometry](#)
- [Cell Culture](#)

PSMD5 Antibody(C-term) - Images

PSMD5 Antibody (C-term) (Cat. #AP19711b) western blot analysis in HepG2 cell line lysates (35ug/lane). This demonstrates the PSMD5 antibody detected the PSMD5 protein (arrow).

PSMD5 Antibody(C-term) - Background

The 26S proteasome is a multicatalytic proteinase complex with a highly ordered structure composed of 2 complexes, a 20S core and a 19S regulator. The 20S core is composed of 4 rings of 28 non-identical subunits; 2 rings are composed of 7 alpha subunits and 2 rings are composed of 7 beta subunits. The 19S regulator is composed of a base, which contains 6 ATPase subunits and 2 non-ATPase subunits, and a lid, which contains up to 10 non-ATPase subunits. Proteasomes are distributed throughout eukaryotic cells at a high concentration and cleave peptides in an ATP/ubiquitin-dependent process in a non-lysosomal pathway. An essential function of a modified proteasome, the immunoproteasome, is the processing of class I MHC peptides. This gene encodes a non-ATPase subunit of the 19S regulator base.

PSMD5 Antibody(C-term) - References

Roelofs, J., et al. Nature 459(7248):861-865(2009)
Kaneko, T., et al. Cell 137(5):914-925(2009)
Listovsky, T., et al. EMBO J. 23(7):1619-1626(2004)
Conticello, S.G., et al. Curr. Biol. 13(22):2009-2013(2003)
Yu, X., et al. Science 302(5647):1056-1060(2003)